



# WINTON PROFESSIONAL FINISHING MOWER WFP SERIES



**OWNERS MANUAL**

**PLEASE READ THIS MANUAL BEFORE OPERATING THE MOWER**

Congratulations on purchasing your new **Winton** mower!

Before you get started, we have provided a helpful space to jot down a few important details about your new Winton machine.

Model Number:    WFP

Serial Number:

Date of purchase:

Factory Reference: EA180 / EA215 / EA235

This manual should be considered a permanent part of this machine and should remain with it even if the machine is subsequently sold.

Winton continually seeks advancements in its product design and quality. Therefore, while this manual contains the most current product information available at the time of printing, there may be minor discrepancies between your machine and this manual.

If you have any questions concerning this manual, please consult your local dealer.

First Published:

## General Safety Information

Ensure all potential operators read this manual thoroughly before using the machine.

**Safety:** Ensure tractor and machine is stationary and keys out of ignition before set-up/maintenance.

**Safety:** Failure to follow good safety standards could result in severe injury or even death.

**Misuse:** This machine is designed for use with compact tractors, and should be used only for the indicated purpose. Winton does not take responsibility if the machine is used for any other purpose. Children must not operate the machine under any circumstance.

**Modification:** Do not modify equipment in any way. This may impair the operation and overall safety of the machine.

**Tractor requirements:** Use only with compact tractors within power range specified.

**Misuse transport:** Do not use machinery to transport personnel or livestock.

**Condition:** For the safety of personnel and optimum performance of the machine, you should check the condition of the machine and the tractor before starting. Before use check all nuts and bolts are tight.

**Spacial awareness:** Always check the operating area is safe before starting machinery.

**Operator clothing:** The operator should not wear loose clothing while operating machinery.

**Safety wear:** Always use appropriate ear protection when running a tractor and machinery. Ensure you are wearing protective gloves when servicing and using machinery.

**Bystander safety:** Ensure bystanders keep away from the machine when it is in use. Do not touch moving parts when the machine is at work.

**Public places:** When travelling on the road/public places, always keep the PTO turned off

**Maintenance:** Always keep the machine maintained and in a good state. Where necessary, repair or replace any defective parts. Do not modify the machine.

**Sharp objects:** Pay attention to the sharp/pointed parts while servicing the machine.

**Safety guards:** All protective parts should be in good condition before operating machinery.

**Safety signs/signifiers:** Keep all safety signs clean and legible. Replace any which are missing or illegible. If a component with safety sign(s) is replaced, make sure new safety sign(s) are attached in the same locations.

**Operating speeds:** Machinery and PTO should be operated at the recommended speed at all times.

**Safety awareness:** Good safety requires that you familiarise yourself with various safety signs, the type of warning and the area, or particular function related to that area.

**Alertness:** Never consume alcohol or drugs as these can hinder alertness/coordination. Consult your doctor about using this machine while taking prescription medications.

## General Safety Information (Continued)

### Machinery Pre-Use Checks

On receipt of your new Winton machine and again within the first 4 hours of use, or the 'shake in period', we always recommend checking over the machine.

- Check all bolts, nuts and screws are tight on the unit.
- Tighten/check any bolts and nuts securing blades.
- If your machine has belts check the tension and adjust if required.
- Apply grease to grease points if necessary.
- Check gear oil level and top up if needed. Do not overfill.

### Tractor Pre-Use Checks

Check that the machine is properly attached to the tractor. Ensure that secure pins are used on the linkage mounting pins.

Be sure to add extra weights to the front of the tractor or add wheel weights if required.

Check that the tractor PTO shaft turns freely and that the machines PTO drive shaft can extend easily. Grease the PTO drive shaft using the grease points.

The chain on the PTO shaft should be checked and in a good condition. The universal joints installed should be in a good state, with proper protective parts.

Before installing the PTO shaft, the tractor and machine should be stopped and the key removed.

Install and secure all safety guards, doors and covers before starting.

Bystanders should leave the immediate area before connecting the drive to the tractor.

### Running/Operating Checks

- Always keep the PTO output from the tractor at **540 RPM** when running machinery.

### Post-Use Regular Checks

Check blades, belts and wearing parts. Be sure they are not damaged and blades swing freely in their mount. Repair or replace as required.

Clean machinery and check for/clear any entangled material which may have got stuck around the rotating parts.

## Contents

	Pg.
General Safety information	1-2
1. Dimensions and Specifications	3
2. Installation & Set Up	4
3. Cutting Height Adjustment	5
4. Gear Oil Change & Check	6-7
5. Adjusting Belt Tension	8
6. Linkage Extension	9
7. Servicing & Maintenance	10-11
8. Parts Diagram & Parts List 1	12-15
9. Parts Diagram 2 & Parts List 2	16
10. Parts Diagram 3 & Parts List 3	17
PTO Shaft Resizing	19
Winton Product Warranty	20
Trouble Shooting	21

## 1. Dimensions & Specification

Model	WFP180	WFP215	WFP235
Weight	239kg	289g	320kg
Working Width	180cm	215cm	235cm
Number Of Blades	3	3	5
Recommended Tractor HP	25-55 HP	30-60 HP	35-70 HP
Width	190cm	230cm	245cm
Depth	170cm	170cm	170cm
Height	80cm	80cm	80cm
PTO Shaft Size	70-100cm	70-100cm	70-100cm
Cutting Height	2-9cm	2-9cm	2-9cm
Linkage Size	Category 1	Category 1	Category 1
Number Of Drive Belts	2	2	2

## 2. Installation & Set Up

**Safety:** Ensure tractor and machine is stationary and keys out of ignition before set-up/maintenance.

**Safety:** Before attaching/detaching machinery ensure the hydraulic lift system is in a neutral position.

**Safety:** Make sure the PTO drive isn't connected at any point until instructed to do so.

### You will need:

Your tractor, tractor top link arm (adjustable), linkage pins, PTO shaft & some elbow grease!

### Attaching The Mower

Start by finding a flat piece of ground. Lower the three point linkage on your tractor to its lowest position and attach the mower to the tractor using the three point linkage pins and linch pins. Attach the top linkage arm to the floating top link to allow the mower to "float" behind the tractor [see section on linkage extension].

Ensure that all four wheels are level on the ground when attached. Check the clearance between the bottom of the blades and the ground, this should be at least 20mm.

The cutting height can be set by adjusting the wheel spacers on the machine to increase or decrease the blade clearance as required [see section on adjusting the cutting height].

The working speed of the machine should always be at a walking pace (approx. 2 to 5 mph) depending on the working conditions. Longer patches of grass should be cut at a much slower pace for the best cut and to avoid any damage to the mower. Remember, finishing mowers are designed for shorter frequently maintained grass. You may need to cut or top any overgrown areas first before using the finishing mower.

Check your PTO shaft's grease points and apply grease if needed. Then attach the PTO drive shaft and ensure the locking pin is secure on both the tractor and mower sides. Attach the chain to a secure point on the tractor/implement.

Operate the mower the with tractor in low range gear and the PTO delivering 540 RPM.

### Pre-Mowing Checklist

Before starting the machine, always check and adjust the following:

- Set correct cutting height. [Section 3]
- Oil level of the gearbox. [Section 4]
- Check the belt tension. [Section 5]
- Lubrication/grease points. [Section 7]
- Tightness of all bolts, nuts and screws.
- All protective guards are in place before operating.

### 3. Cutti Height Adjustment

**Safety:** Ensure tractor and machine is stationary and keys out of ignition before set-up/maintenance.

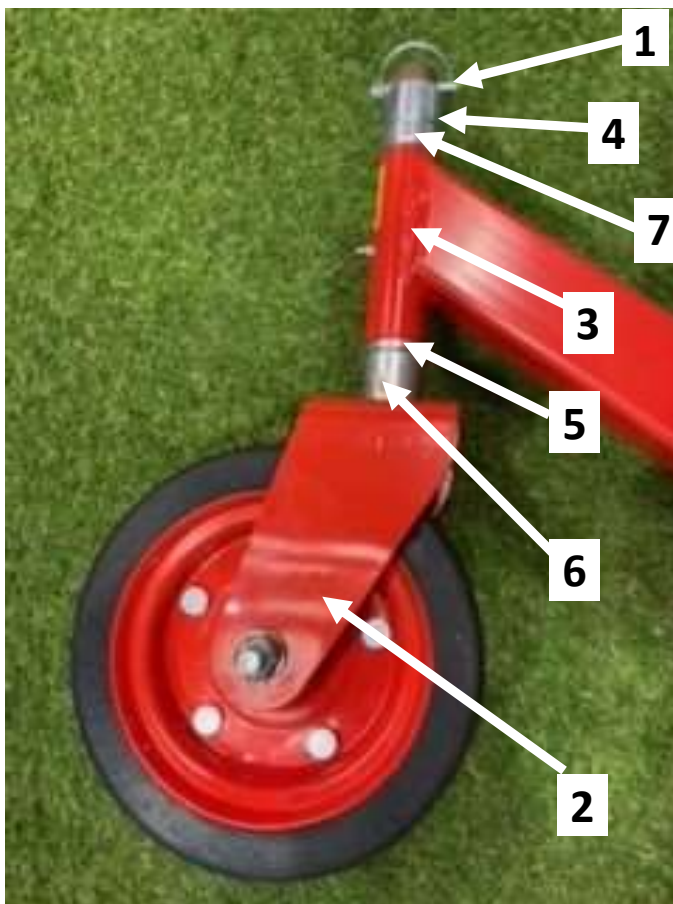
**Note:** Clearance of blades to the ground should be at least 20mm and higher on un-even ground.

Getting the cutting height right is the key to creating the best cut and finish when mowing. The cut height can be set by simply adjusting the mower deck height with the wheel spacers.

There are different sizes of adjusting spacers on the wheel forks which can be used to achieve a range of cutting heights. The spacers are moved from under and above the wheel bracket to achieve the desired height.

Always make sure all spacers are in the same position on all wheels to ensure an even and level cut.

#### Wheel Adjustment



1. Use the tractor linkage and secure stands to raise the mower off the wheels.
2. Remove linch pin **(1)** and slide wheel fork **(2)** out of bracket **(3)**.
3. Position spacers **(4, 5, 6 & 7)** above or below the wheel bracket as required.
4. Replace wheel fork **(2)** and linch pin **(1)**.
5. Repeat above on the remaining three wheels.

## 4. Gear Oil Check & Change

**Safety:** Ensure tractor and machine is stationary and keys out of ignition before set-up/maintenance.

**Safety:** Always follow manufacturers instructions for oils and lubricants.

### Important Information

Gear Oil Grade	80w90 gear oil (API GL5 grade) for all conditions (or equivalent)
Gearbox Oil Level	Approx. 0.5 litres to level plug
Level Plug Size	8mm Allen key
First Oil Change	50 hours use
Oil Change Frequency	250 hours/yearly (whichever is first)

Do not mix old and new oils together or mix different types of oil. Always dispose of old oils in the safely and in the correct manner.

Always make sure the machine is on a flat and level surface when checking oil levels. The machine should be left at a standstill to cool down for at least 10 minutes. Ensure the machine is stable before carrying out work and will not upturn.





## 4. Gear Oil Check & Change (Continued)

**Safety:** Ensure tractor and machine is stationary and keys out of ignition before set-up/maintenance.

**Safety:** Always follow manufacturers instructions for oils and lubricants.

### Oil Change/Check Gearbox

1. Remove filler/breather plug **(1)** on top of the gearbox unit.
2. Remove level plug **(2)** on the side of the gearbox.
3. Add oil through the filler/breather **(1)** (if required). The oil should reach the bottom of the level plug **(2)**.
4. Replace filler/breather plug **(1)** and level plug **(2)**.

Draining oil: Use an oil pump to remove old oil and any debris when changing oil.

Bolt tension: Always make sure bolts are tightened correctly. The filler/level plug should be secure but not over tightened.

### Oil Change Log

Oil Change #1	Oil Change #2	Oil Change #3	Oil Change #4	Oil Change #5	Oil Change #6
/ /	/ /	/ /	/ /	/ /	/ /

## 5. Adjusting Belt Tension

**Safety:** Ensure tractor and machine is stationary and keys out of ignition before set-up/maintenance.

### Correct Belt Tension

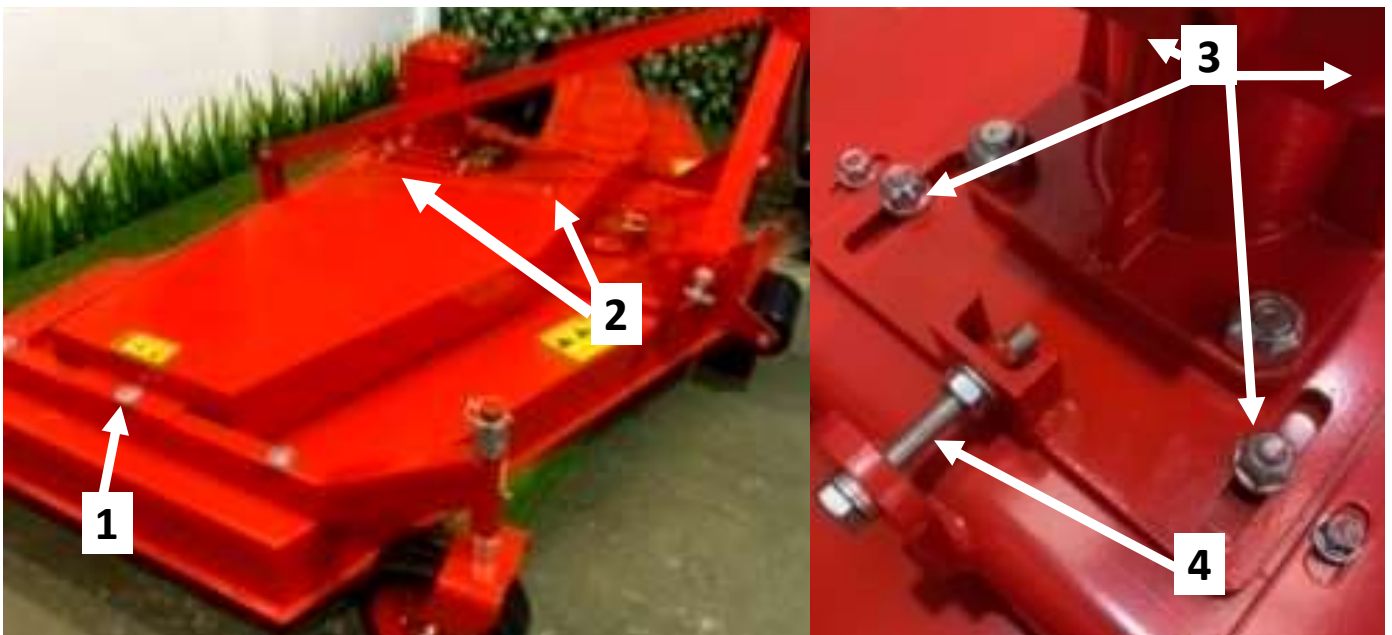
The correct belt tension is achieved when the belt can be deflected by the belt thickness about 10mm at the centre point between the pulleys. A generic measure across machines is the belt should be able to twist a quarter turn by hand. Any more and they are too loose and any less and too tight, you may run the risk of losing drive to the mower or burning the belts out prematurely.

Always use a straight edge to make sure the belt pulleys are in line and running true. If misaligned, contact your dealer or service engineer for technical support.

### Belt Tensioning & Replacement

1. Remove bolt **(1)** on the wheel brackets then bolts **(2)** on the guard by the gearbox, repeating on both sides..
2. Remove both belt guard panels to gain access to the belts.
3. Loosen off bolt & nuts on gearbox adjustment plate **(3)**.
4. Wind in/out bolt **(4)** to adjust the plate and tension the belts as required.
5. Tighten bolt & nuts **(3)** and replace belt guards.
6. Replace and tighten bolts **(1 & 2)**

To change belts, loosen off the belt tension. They are a tight fit and will need some elbow grease.



## 6. Linkage Extension

**Safety:** Ensure tractor and machine is stationary and keys out of ignition before set-up/maintenance.

Some tractors with shorter lower linkage arms or larger rear tyres may find that attaching the finishing mower causes the tractor wheels to touch the mower wheels. In these cases linkage extensions can be supplied to prevent the problem.

The lower linkage extenders (**A**) can be attached or detached as required. These are simply bolted to the A frame bracket on the mower. The lower linkage pins can be moved between the extension brackets and mower as needed.



The mower also has a floating top linkage (**B**). This is not fixed into place which allows the mower to remain on all wheels over any bumps or contours in the ground.

Lift the floating linkage (**B**) by hand and attach to the tractor as you would with a fixed top linkage point. Adjust the tractor's top linkage arm so the linkage is secure.

Always take extra care if lifting the tractor's 3 point linkage when the mower is attached. As the floating top linkage is not rigid the mower is likely to be unstable. Use a fixed point for any lifting.

## 7. Servicing & Maintenance

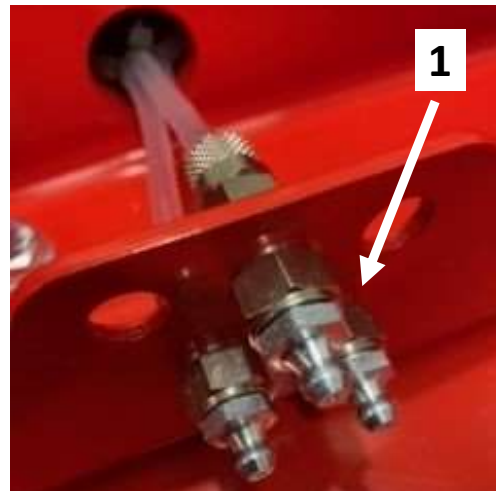
**Safety:** Store all lubricants away from excessive heat, dust, moisture and contaminants.

**Safety:** Ensure tractor and machine is stationary and keys out of ignition before set-up/maintenance.

Grease Type	Multi-purpose lithium based grease (EPI or EP2)
Grease Frequency	Check every 4-8 hours (top up if required)

### Greasing & Lubrication Points

1. Blade Hubs x3 (x5 on WFP235 model) **(1)**.
2. Wheel Fork Tubes x4 **(2)**.
3. Wheels x4 **(3)**.
4. PTO shaft x2.



## 7. Servicing & Maintenance (Contin ed)

**Safety:** Store all lubricants away from excessive heat, dust, moisture and contaminants.

**Safety:** Ensure tractor and machine is stationary and keys out of ignition before set-up/maintenance.

Wipe grease nipples with a clean cloth before greasing to avoid injecting any dirt or grit. Press grease into each grease nipple three to five times. We recommend using a hand-held grease gun for best results.

If grease nipples will not take grease, remove and clean thoroughly. Also clean lubricant passageway. If you notice any grease points are broken replace or repair them immediately.

### Other Maintenance

**Blades:** Check condition of the blades and replace if worn/broken. Always take care when handling blades, wear gloves and use suitable tools for changing blades. If blades are replaced check they are secure to avoid any excessive vibration.

**Oils:** Ensure oil levels are checked and topped up when needed. Replace any oils per the schedule.

**PTO Sha :** Check the condition of your PTO shaft and replace if worn or damaged immediately.

**Cleaning:** Ensure the mower deck is cleaned of mud and grass. Remove debris from any moving parts to prevent entanglement. Do not spray water on bearings when cleaning with a high pressure washer.

**Bearings:** Check the bearings on the three blade hubs. If the oil seals are damaged debris may enter the bearings. Clean and replace with new bearings if necessary. Run the mower without a load for approx. 3-5 minutes to check bearings are operating smoothly.

**Paintwork:** Re-coat any damaged paintwork to prevent corrosion.

**Wheels:** Check the condition of all wheels and replace if any are broken or damaged.

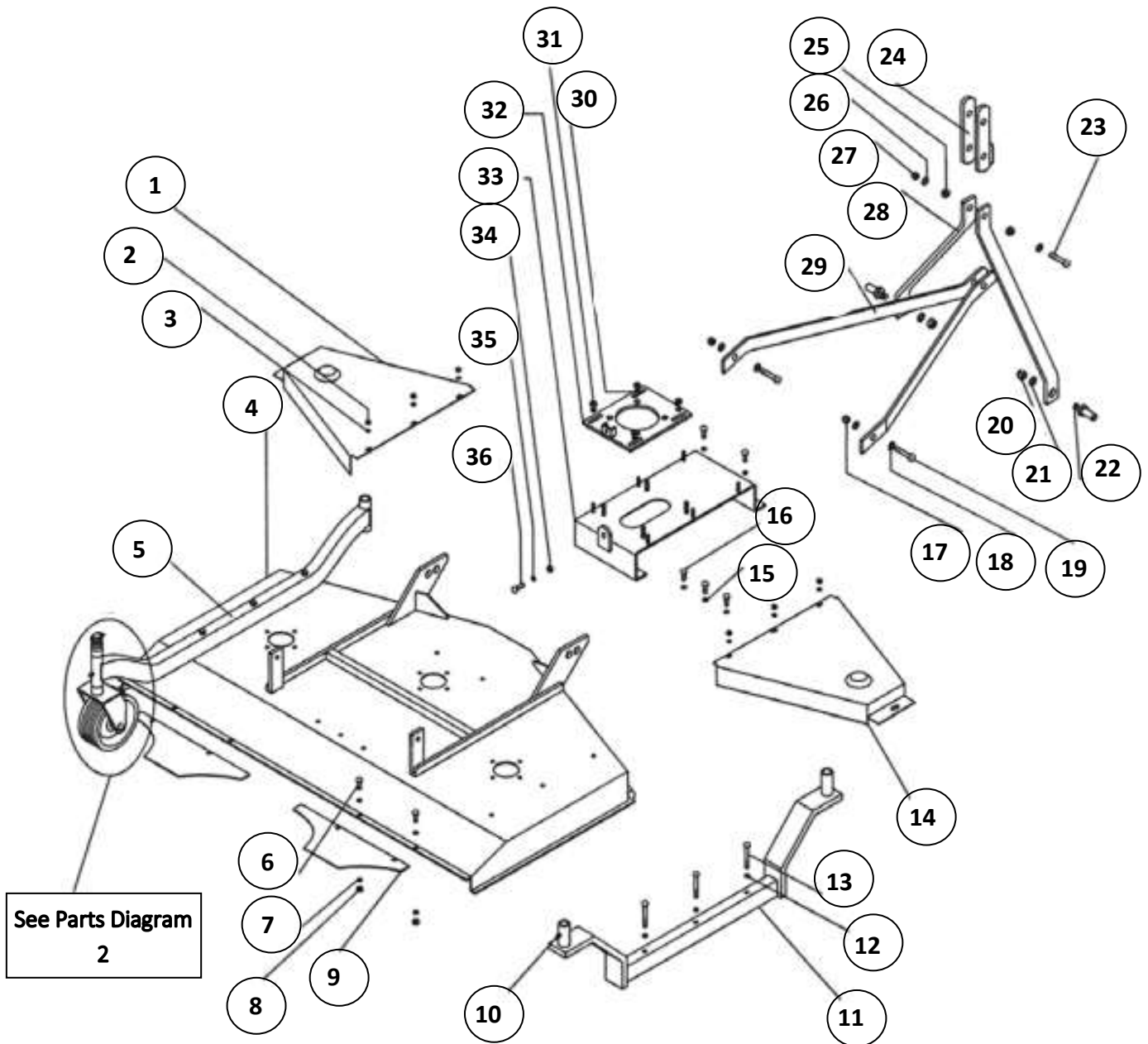
**Storage:** Store the machine in a dry, level area. Chock the wheels if necessary.

**Belts:** Check the condition of belts, replace if worn or frayed. Tension belts if required.



\*The periods recommended are based on normal operating conditions. Severe or unusual conditions may require more frequent maintenance.

## 8. Parts Diagram 1 - WFP180 & WFP215 Frame



## 8. Parts List 1 - WFP180 & WFP215 Frame

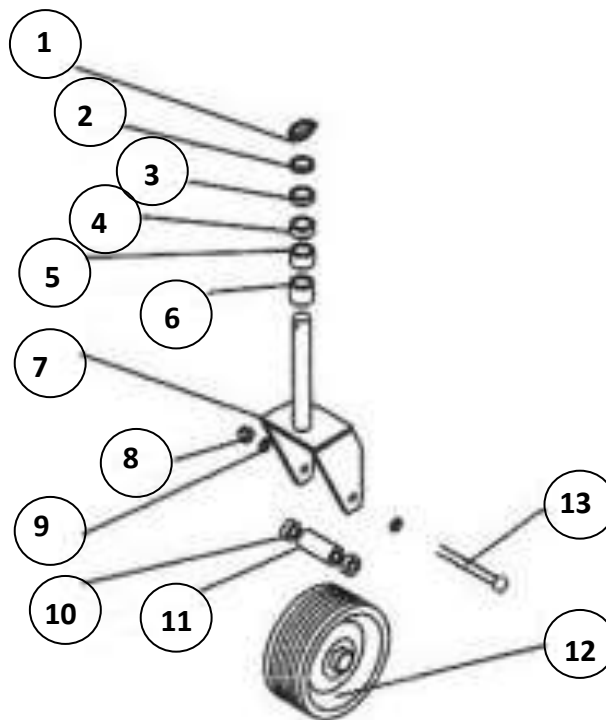
Dia No.	Part Number	Part Description	Qty
1-1	SRM162VD	left pulley cover 180	1
1-2	PRM402VD	left pulley cover 215	1
2	40200002	M8 self locking nut	6
3	40300002	M8 washer	6
4-1	PRM062VD	hood/deck 180	1
4-2	PRM080VD	hood/deck 215	1
5	PRM064VD	wheel frame (standard)	2
6	40100076	M8x20 bolt	4
7	40300002	M8 washer	4
8	40200002	M8 nut	4
9-1	PRM210VD	wheel scraper 180	2
9-2	PRM421VD	wheel scraper 215	2
10	40600001	linch pin (anti-scalp roller upgrade)	4
11	PRM077VD	wheel frame (anti-scalp roller upgrade)	2
12	40300028	M10 penny washer	6
13	40100045	M10x80 bolt	6
14-1	SRM161VD	right pulley cover 180	1
14-2	PRM403VD	right pulley cover 215	1
15	40200003	M12 washer	4
16	40100043	M12x35 bolt	4
17	40200006	M12 nut	4
18	40300004	M12 washer	4
19	40100015	M12x45 bolt	2
20	40200025	M22 nut	2
21	40300024	M22 washer	2
22	SRM220D	M22 bottom link pin	2

## 8. Parts List 1 (Continue ) - WFP180 & WFP215 Frame

Dia No.	Part Number	Part Description	Qty
23	40100046	M12x100 bolt	1
24	SRM059VD	A-frame top bracket	1
25	SRM233D	M12x5 spacer	2
26	40300004	M12 washer	2
27	40200006	M12 nut	1
28	SRM185VD	A-frame front bracket	1
29-1	SRM188VD	A-frame support 180	1
29-2	SRM413VD	A-frame support 215	1
30	40300003	M10 washer	4
31	40200003	M10 nut	4
32	SRM064VD	gearbox adjustment plate	1
33	SRM070VD	gearbox mount plate	1
34	40200005	M10 nut	1
35	40300003	M10 washer	1
36	40100044	M10x80 bolt	1



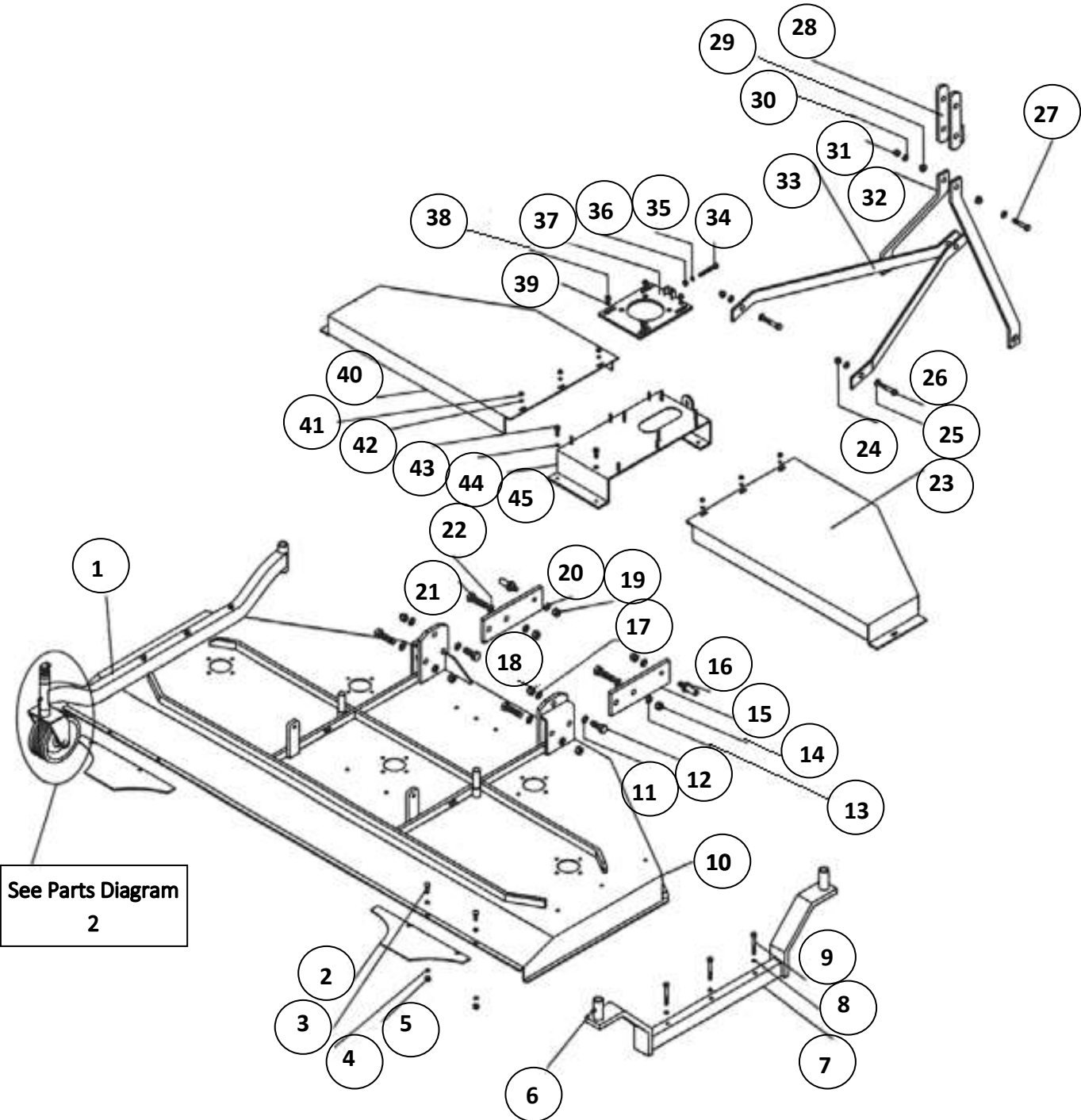
## 9. Parts Diagram 2 - Wheel Assembly



## 9. Parts List 2 - Wheel Assembly

Dia No.	Part Number	Part Description	Qty
1	41300002	linch pin	1
2	SRM203ZD	2mm spacer	1
3	SRM204ZD	6mm spacer	1
4	SRM205ZD	14mm spacer	1
5	SRM206ZD	22mm spacer	1
6	SRM207ZD	33mm spacer	1
7	SRM053VD	wheel fork	1
8	40200006	wheel nut	1
9	40300004	M12 washer	1
10	SRM205ZD	14mm spacer	2
11	SRM232ZD	wheel spacer bush	1
12	42900001	wheel	1
13	40100048	wheel bolt	1

# 10. Parts Diagram 3 - WFP235 Frame



## 10. Parts List 3 - WFP235 Frame

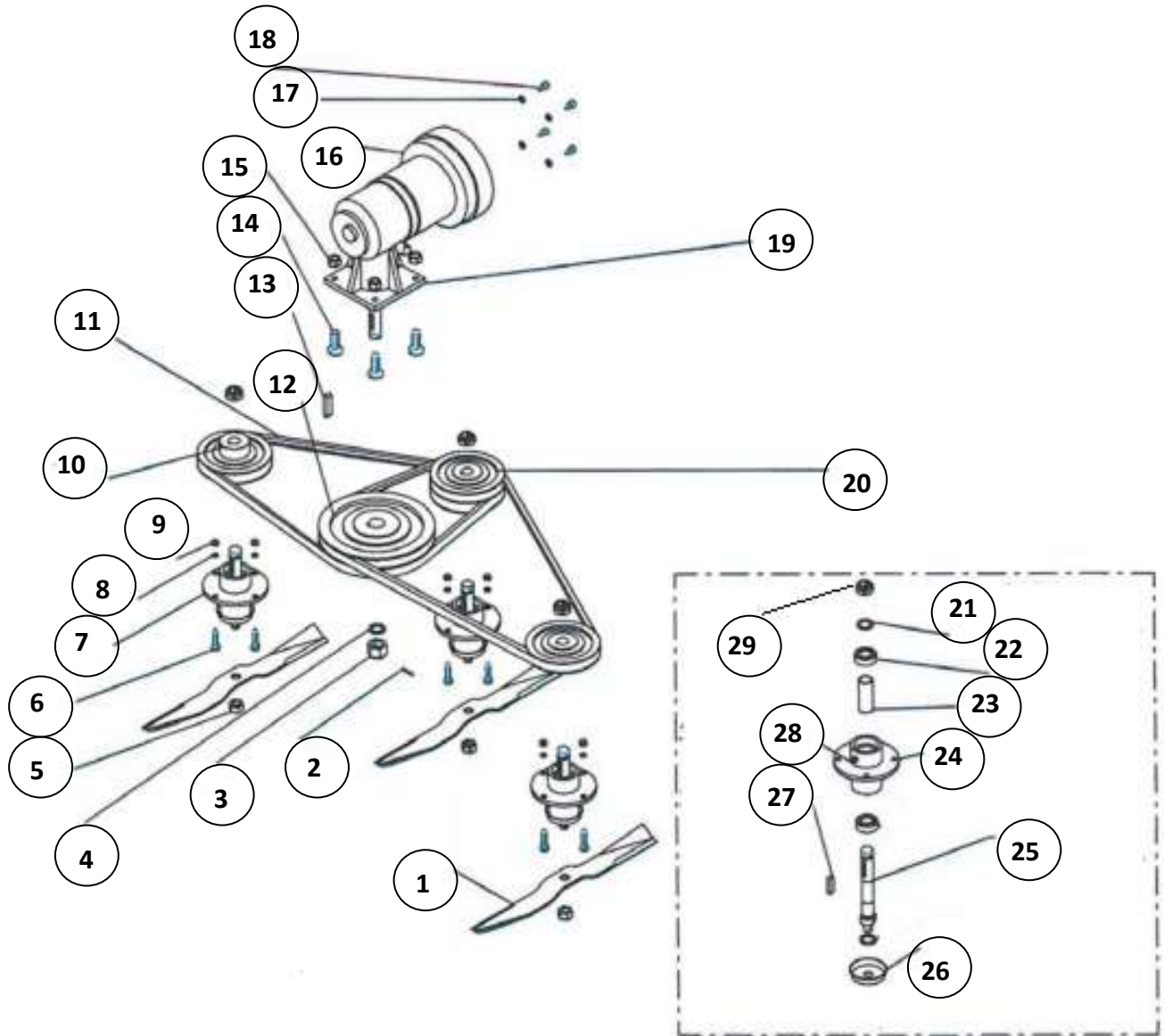
Dia No.	Part Number	Part Description	Qty
1	PRM065VD	wheel frame (standard)	2
2	PRM210VD	wheel scraper	2
3	40100076	M8x20 bolt	4
4	40300002	M8 washer	4
5	40200002	M8 self locking nut	4
6	40600001	linch pin (anti-scalp roller upgrade)	4
7	XRM057VD	wheel frame (anti-scalp roller upgrade)	2
8	40300028	M10 penny washer	6
9	40100045	M10x80 bolt	6
10	XRM140VD	hood/deck	1
11	40300020	M18 washer	2
12	40100040	M18x50 bolt	2
13	40300020	M18 washer	2
14	40200020	M18 nut	4
15	XRM162VD	linkage extension arm	2
16	SRM220D	bottom link pin	2
17	40300020	M18 washer	2
18	40200028	M18 self-locking nut	2
19	40200025	M22 nut	2
20	40300024	spring washer	2
21	40100052	M18x80 bolt	4
22	40300020	M18 washer	2
23	XRM153VD	right pulley cover	1
24	40200006	M12 nut	2
25	40300004	M12 washer	2
26	40100015	M12x45 bolt	2

## 10. Parts List 3 (Continued) - WFP235 Frame

Dia No.	Part Number	Part Description	Qty
27	40100046	M12x100 bolt	1
28	SRM059VD	A-frame top bracket	1
29	SRM233D	M12x5 spacer	2
30	40300004	M12 washer	1
31	40200006	M12 nut	1
32	XRM155VD	A-frame front bracket	1
33	XRM156VD	A-frame supports	1
34	40100044	M12x80 bolt	1
35	40300003	M12 nut	1
36	40200005	M12 washer	1
37	SRM064VD	gearbox adjustment plate	1
38	40200003	M10 nut	4
39	40300003	M10 washer	4
40	XRM154VD	left pulley cover	1
41	40200002	M8 nut	6
42	40300002	M8 washer	6
43	40100003	M12x35 bolt	2
44	40300003	M12 washer	2
45	SRM070VD	gearbox mount plate	1

## Notes

# 11. Parts Diagram 4 - WFP180 & WPF215 Transmission



## 11. Parts List 4 - WFP180 & WFP215 Transmission

Dia No.	Part Number	Part Description	Qty
1-1	SRM312D	blade 180	3
1-2	PRM406D	blade 215	3
2	42700002	split pin	1
3	40200021	M24 castle nut	1
4	40300015	M24 spring washer	1
5	40200029	M18 blade nut	3
6	40100012	M10x30 bolt	12
<b>7</b>	<b>SRM051D</b>	<b>blade spindle complete</b>	3
8	40300003	M10 washer	12
9	40200003	M10 nut	12
10-1	SRM198D	single pulley 180	2
10-2	SRM404D	single pulley 215	2
11-1	42800003	belt 180	2
11-2	42800012	belt 215	2
12	SRM193D	large double pulley	1
13	40500005	gearbox shaft key	1
14	40200008	M16x50 bolt	4
15	40100047	M16 nut	4
16	41900004	PTO shaft cover	1
17	40300002	M8 washer	4
18	40100042	M8x15 bolt	4
19	42000010	gearbox	1
20-1	SRM199D	small double pulley 180	1
20-2	PRM405D	small double pulley 215	1
21	SRM203ZD	2mm spacer	6
22	41000005	bearing	6

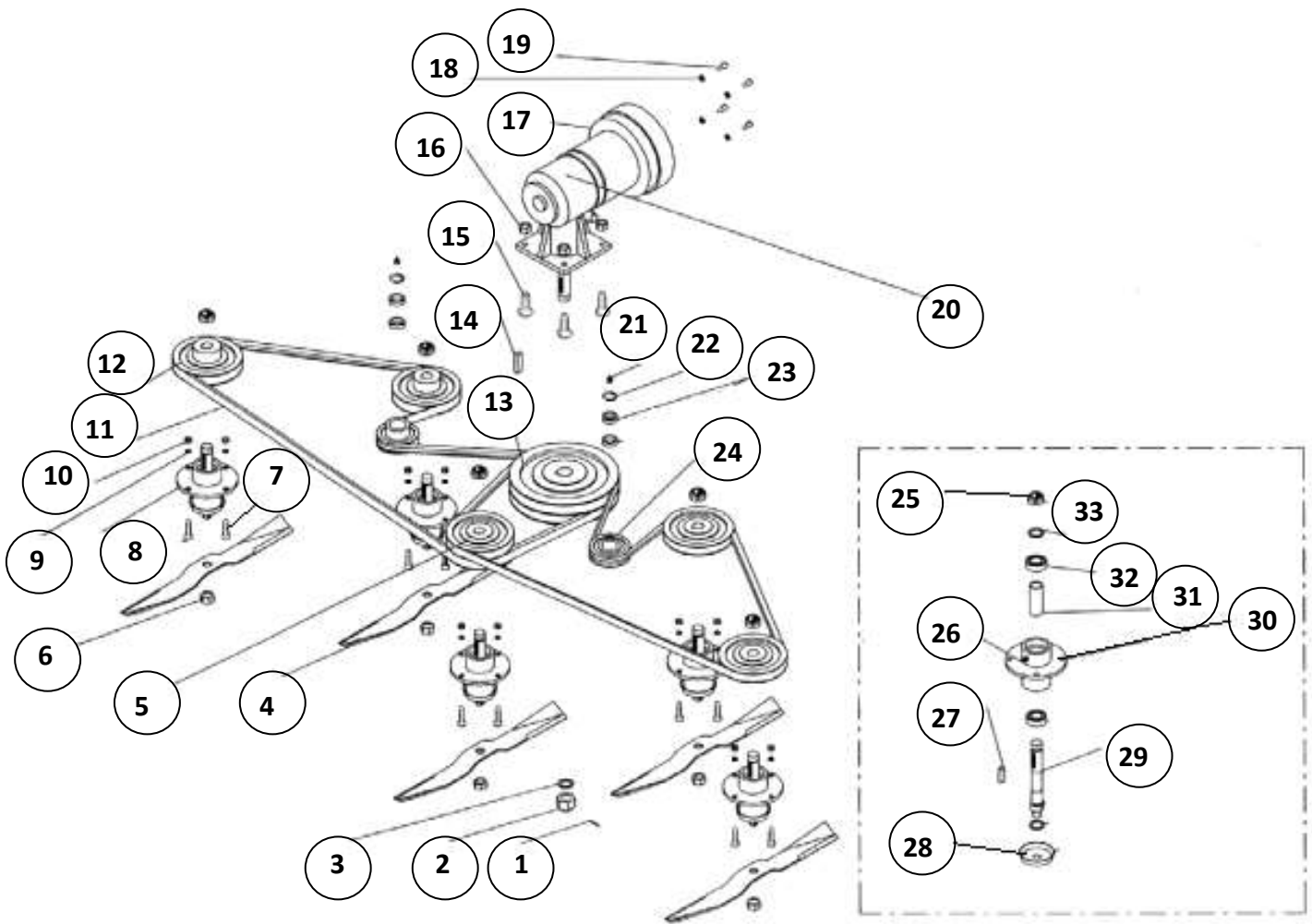
## 11. Parts List 4 (Continued) - WFP180 & WPF215 Transmission

Dia No.	Part Number	Part Description	Qty
23	SRM192D	spindle bush	3
24	SRM052D	hub body	3
25	SRM190D	blade shaft	3
26	SRM191ZD	bearing shield	3
27	40500001	universal key	3
28	40600002	grease connector	3
29	40700003	M24 nut (c-spanner)	3



## Notes

# 11. Parts Diagram 5 - WFP235 Transmission



## 11. Parts List 5 - WFP235 Transmission

Dia No.	Part Number	Part Description	Qty
1	42700002	split pin	1
2	40200021	M24 castle nut	1
3	40300015	M24 spring washer	1
4	SRM311D	blade 235	5
5	SRM197D	small double pulley	1
6	40200029	M18 blade nut	5
7	40100012	M10x30 bolt	20
<b>8</b>	<b>SRM051D</b>	<b>blade spindle complete</b>	5
9	40300003	M10 washer	20
10	40200003	M10 nut	20
11	42800004	belt	2
12	SRM196D	large single pulley	4
13	SRM193D	large double pulley	1
14	40500005	gearbox shaft key	1
15	40200008	M16x50 bolt	4
16	40100047	M16 nut	4
17	41900004	PTO shaft cover	1
18	40300002	M8 washer	4
19	40100042	M8x15 bolt	4
20	42000010	gearbox	1
21	40600001	grease nipple	1
22	40400007	retaining ring	1
23	41000005	bearing	2
24	XRM157D	small single pulley 215	2
25	40700003	M24 nut (c-spanner)	5
26	40600002	grease connector	5

## 11. Parts List 5 - WFP235 Transmission

Dia No.	Part Number	Part Description	Qty
27	40500001	universal key	5
28	SRM191ZD	bearing shield	5
29	SRM190D	blade shaft	5
30	SRM052D	hub body	5
31	SRM192D	spindle bush	5
32	41000005	bearing	10
33	SRM203ZD	2mm spacer	10

## PTO Sha Resizing

**Safety:** Ensure tractor and machine is stationary and keys out of ignition before carrying out any work.

If you are not confident in carrying out the work consult your local supplier or mechanic.

Most PTO driven implements are supplied with a standard sized PTO shaft. As all tractors vary this often means cutting it down to size. Always replace worn or damaged PTO shafts.

Attach the machine to the tractor without the PTO shaft, raise the linkage so the PTO shaft is level/horizontal. Measure the length between tractor PTO and the machine's shaft. If the compressed (closed) PTO shaft length exceeds the one measured here then the driveline will need to be cut.

1. PTO length adjustment, first remove PTO shaft shielding.



2. Shorten the driveline tubes to proper equal lengths.



3. Tidy edges of the drive tube with a file and clean all fillings from the tubes.



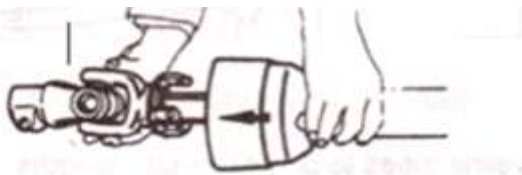
4. Shorten the equally long guard tubes to the same length as the driveline tubes.



5. Grease the internal driveline tube.



6. Fit the guard on the shaft.



7. Make sure that the length allows for at least 16cm (6 inches) of overlap.



## Winton Product Warranty

We always strive to create great products, but when something does go wrong we have a strong network of resellers on hand throughout the UK to help out.

### Warranty Claims

Before you get in touch here are 5 pieces of information your Winton reseller will need to progress your claim:

- Your invoice/order details - to include date of purchase
- Machine model number
- Machine serial number
- Details of the fault
- Images/videos of the fault

### The Terms & Conditions

All products purchased as new are covered under our 12 month warranty from the date of purchase. During this period Winton will repair or replace defective parts free of charge. This warranty is given on the proviso that the product has been used and maintained according to the Owner's Manual.

Warranty is carried out on a return to reseller / manufacturer basis and excludes any labour or delivery / collection costs.

### Exclusions

- Wearing parts are excluded; including but not limited to blades, belts and bearings.
- Modification of the product in any way will cease the manufacturers warranty.
- The machine is warranted for one year to the original purchaser, resale within the period will cease the warranty.
- Damage in transit is not covered. Claims will need to be made through the courier or your Winton reseller directly.
- Compensation for down-time, labour or loss of earnings is not covered by the warranty.
- No warranty extension will be granted for replacement parts fitted.
- Damage caused by continued use of a faulty machine will not be covered.

Your **Winton** reseller will provide their own terms and conditions upon purchase, consult this for any additional queries.

## Trouble-Shooting

**Safety:** Ensure tractor and machine is stationary and keys out of ignition before set-up/maintenance.

WFM Problem	Solution
Belt Slipping	<p>Clean the mower deck.</p> <p>Check that belts are not contaminated by oil or grease.</p> <p>Replace belts.</p> <p>Cut down any overgrown areas before using a finishing mower.</p>
Poor cutting	<p>Mow at 540 RPM, check PTO speed and tractor power output.</p> <p>Slow the working speed.</p> <p>Change into a lower gear on the tractor.</p> <p>Tension/replace belts.</p> <p>Check blades, replace if damaged or worn.</p> <p>Raise the cutting height.</p> <p>Adjust tractor top linkage arm to level machine &amp; allow float.</p>
Excessive vibration	<p>Ensure tractor PTO is set to 540 RPM.</p> <p>Replace blades if worn or damaged.</p> <p>Tension/replace belts.</p> <p>Remove belt guard and clean debris from belt area.</p> <p>Check PTO shaft for damage and replace.</p>
Gearbox noisy	<p>Check oil level and top up if required.</p> <p>Extract the oil/debris and replace with new oil.</p>
Blades scalping	<p>Raise the cutting height.</p> <p>Change mowing pattern/route.</p> <p>Reduce speed when turning.</p>
Tractor loaded down by mower	<p>Mow at 540 RPM.</p> <p>Change into a lower gear on the tractor.</p> <p>Cut down any overgrown areas before using a finishing mower.</p> <p>Clean off the mower.</p> <p>Check power output on your tractor.</p>

Always consult your **Winton** dealer if you have any questions about your machine.



**W Winton**

[www.wintonmachinery.co.uk](http://www.wintonmachinery.co.uk)